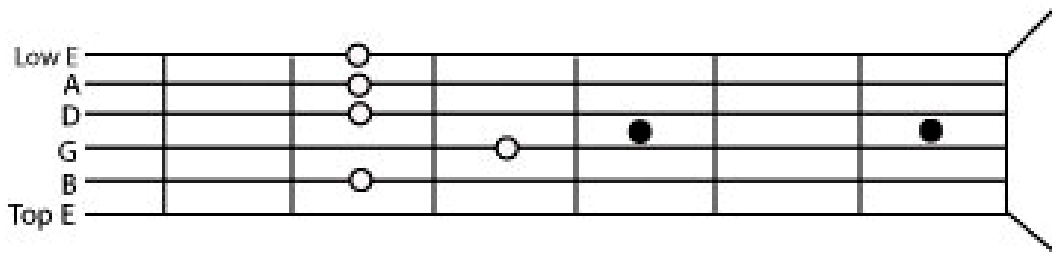


## TUNING UP (MANUAL TUNING)

Many people buy an electronic tuner when purchasing their first guitar – but it is also a good idea to learn how to “*manually*” tune your guitar – just in case!!

Whether your guitar is in stage pitch i.e, 440 MHz (on an electronic tuner - most famous bands and artists record the majority of albums/songs in stage pitch) or not – it must be tuned to the Top E (*thinnest string*).

To do this:



1. Tune “**B**” string to “**Top E**” here by placing 1st finger on 5th fret of B string (strike both until they sound the same if not tighten the B string).
2. Then tune “**G**” to “**B**” string in the same way (4th Fret - *only time you’ll need to use the 4th fret*)
3. Then tune “**D**” to “**G**” string on 5th fret again
4. Then tune “**A**” to “**D**” string on 5th fret again
5. Finally tune the “**Low E**” (thickest) to the “**A**” string on 5th fret again

**NOTE:** This also helps with your “ear training” which is useful for hearing the difference in “pitch” of notes especially useful when playing songs and single notes.